

Controller requirements: SPRINT™ system with SupaScan

www.renishaw.com/SPRINT

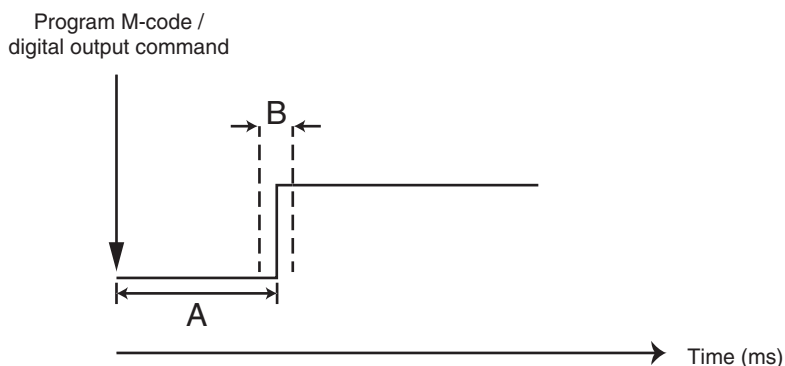
Siemens 840D solution line

The information within this document provides the minimum recommended controller requirements to enable the use of a SPRINT™ system with SupaScan on a machining centre with a Siemens 840D solution line control.

NOTE: Part numbers and descriptions within this document relating to items provided by organisations other than Renishaw are provided for information only. Whilst every effort has been made to ensure these are accurate, please contact the machine tool or controller OEM or distributor for confirmation before purchasing.

Siemens 840D solution line

SINUMERIK Integrate Run MyHMI / 3GL software option P60	6FC5800-0AP60-0YB0
or	
SINUMERIK Integrate Run MyHMI / 3GL option P65 (for Siemens Solution Partners)	6FC5800-0AP65-0YB0
or	
SINUMERIK Operate runtime licence option P66	6FC5800-0AP66-0YB0
1 × Ethernet port	
3 × high-speed digital outputs	
1 × high-speed probe sensor input	
OPTIONAL	
1 × high-speed digital input (for overtravel protection)	



RECOMMENDATIONS:

Time A = < 50 ms

Variation B = < 10 ms

Any increase in these values may impact negatively on cycle times.

The 3 × high-speed digital outputs should be reset when Reset is pressed on the CNC machine tool.

**For worldwide contact details,
visit www.renishaw.com/contact**

