

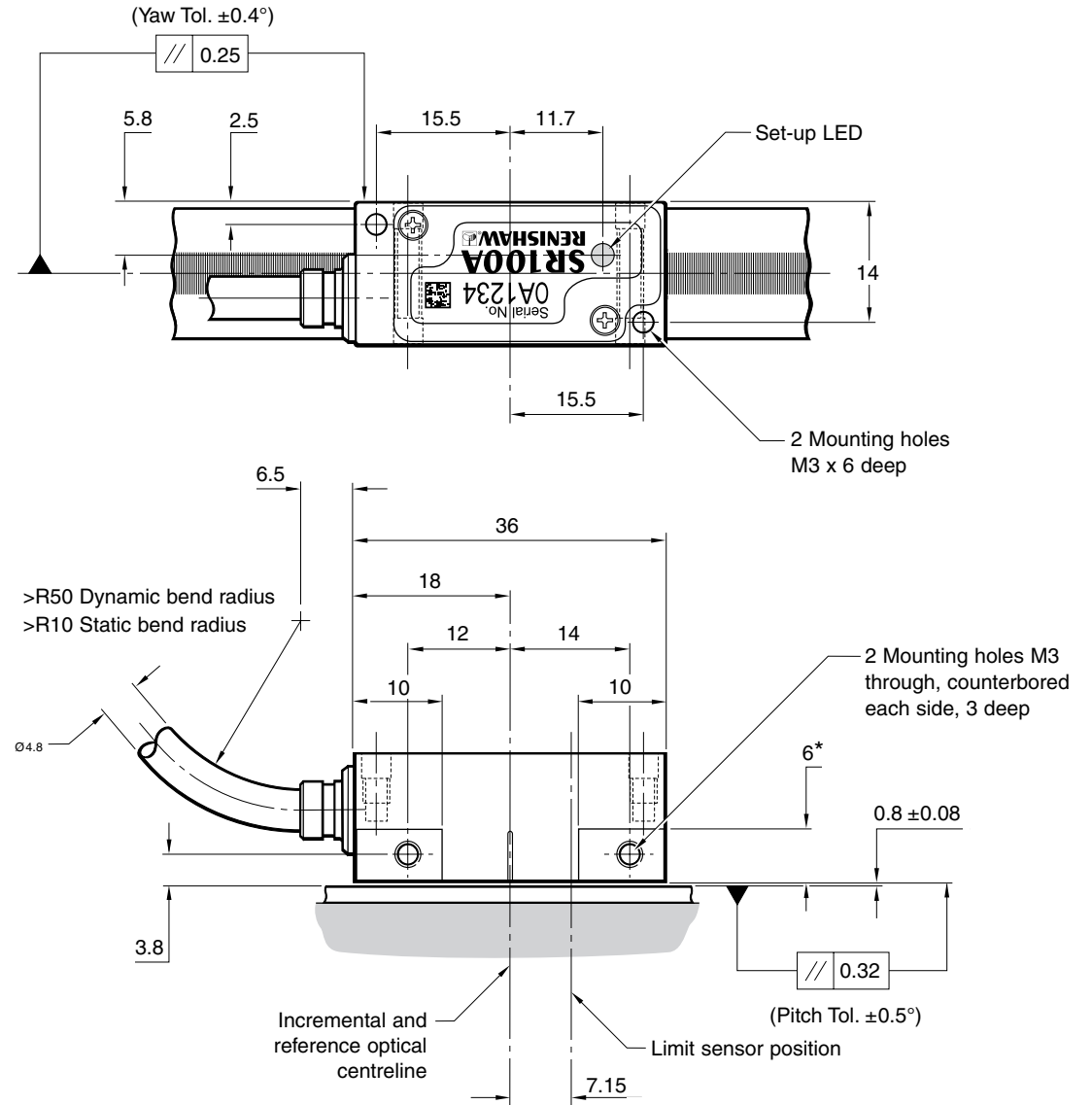
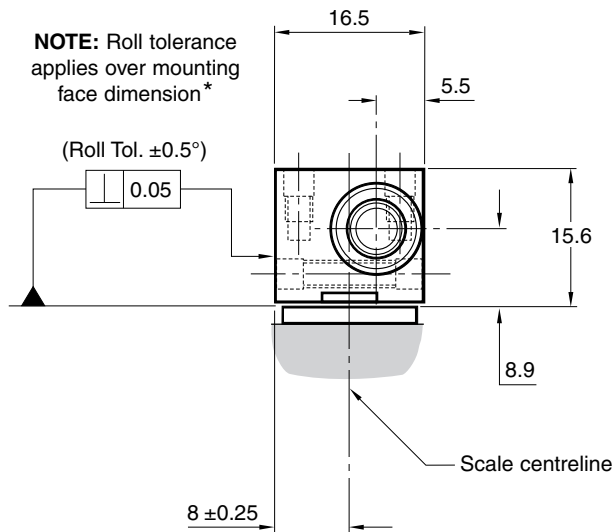
SIGNUM™ readhead mounted on RELM

Dimensions and tolerances in mm.



For optimum performance the readhead should be installed close to nominal geometry. Care should be taken to ensure sufficient clearance between the readhead/mounting bracket and clips/datum clamp.

Only special M3 low-profile screws should be used. Screws are provided with all clips/datum clamps and spares can be supplied if required.



For **SIGNUM™** readhead installation details refer to **SIGNUM™** SR, Si encoder system installation guide (M-9572-0057).